

Basement
26'4" x 16'6"

Bath
3'6" x 3'5"

Laundry
8'9" x 13'10"

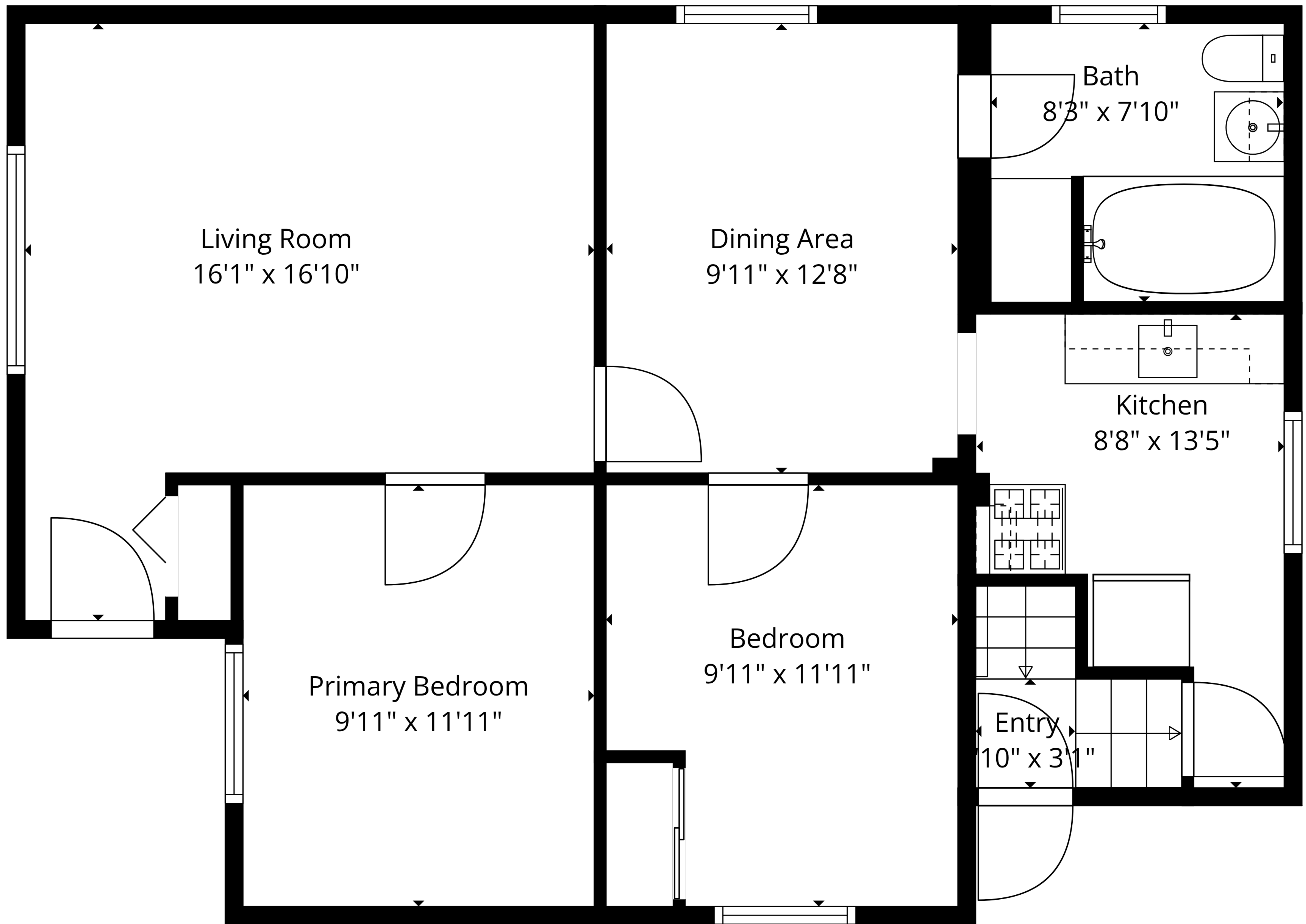
Utility
19'6" x 11'7"

Total: 821 sq. ft

Basement: 15 sq. Ft, 1st Floor: 806 sq. ft

Excluded Areas: Utility: 253 sq. Ft, Laundry: 115 sq. Ft, Basement: 358 sq. Ft,
Walls: 122 sq. ft





Living Room
16'1" x 16'10"

Dining Area
9'11" x 12'8"

Bath
8'3" x 7'10"

Kitchen
8'8" x 13'5"

Primary Bedroom
9'11" x 11'11"

Bedroom
9'11" x 11'11"

Entry
10" x 31"

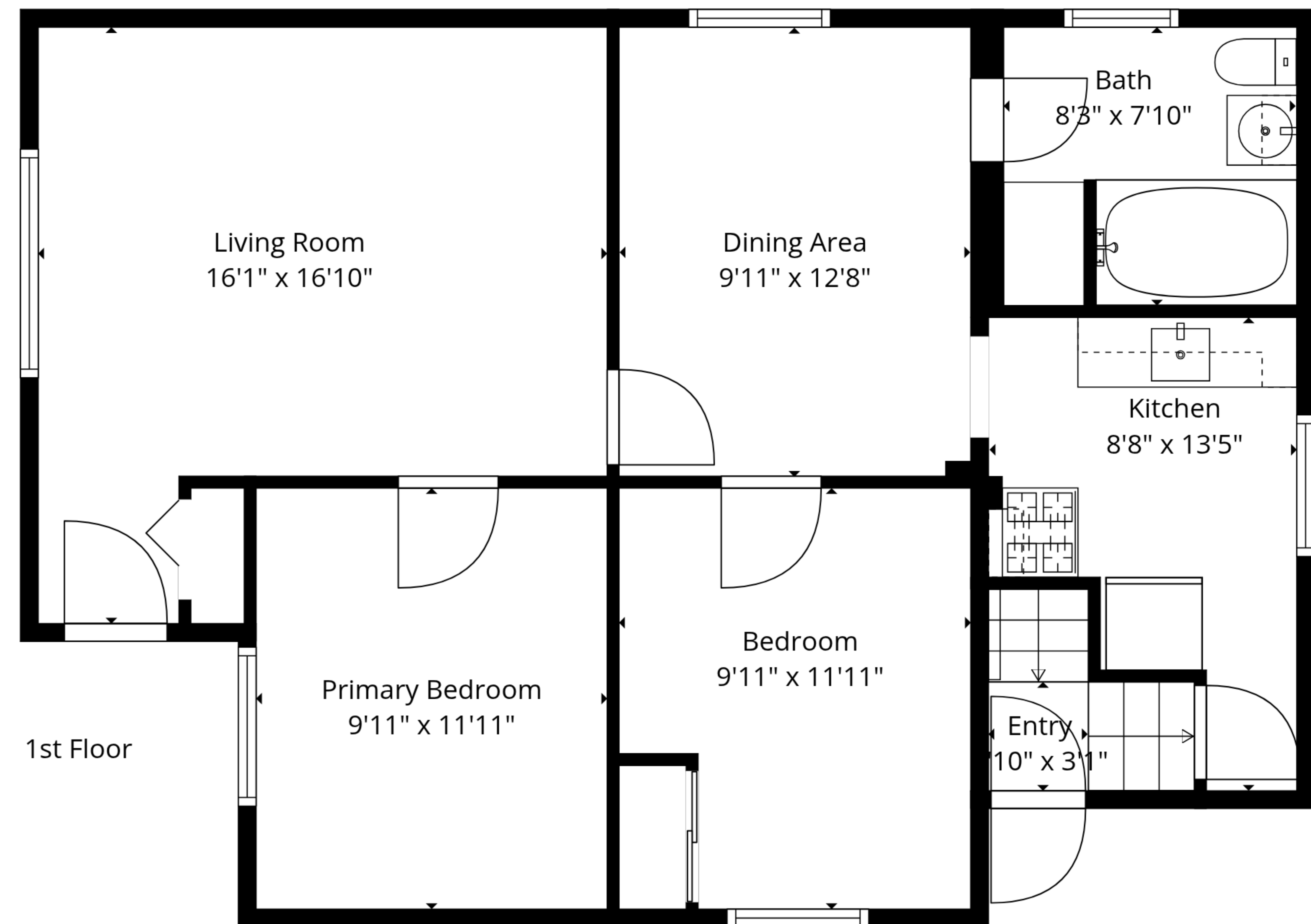
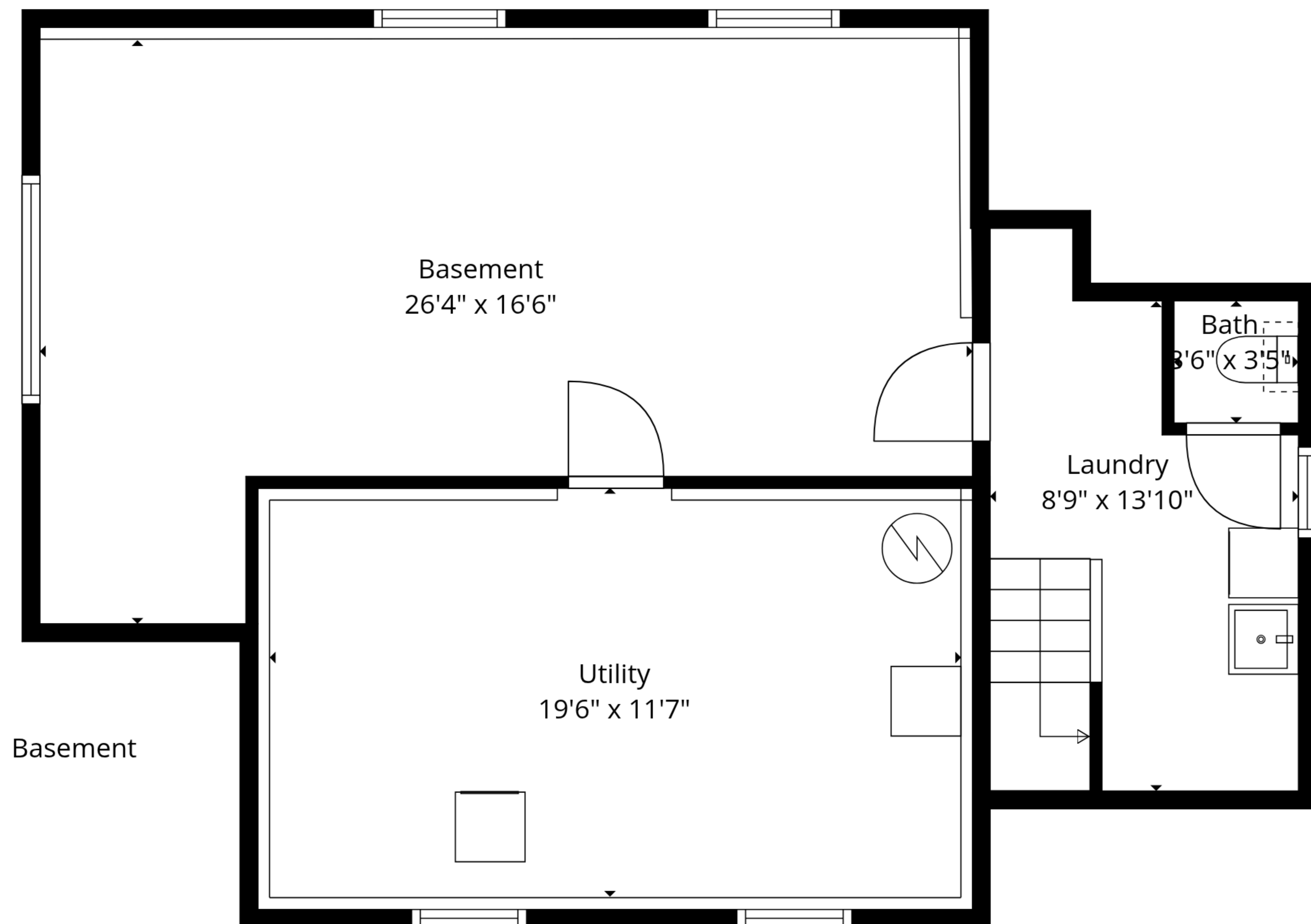
Total: 821 sq. ft

Basement: 15 sq. Ft, 1st Floor: 806 sq. ft

Excluded Areas: Utility: 253 sq. Ft, Laundry: 115 sq. Ft, Basement: 358 sq. Ft,

Walls: 122 sq. ft





Total: 821 sq. ft

Basement: 15 sq. Ft, 1st Floor: 806 sq. ft

Excluded Areas: Utility: 253 sq. Ft, Laundry: 115 sq. Ft, Basement: 358 sq. Ft,

Walls: 122 sq. ft

