

Home report

647 Gibbs Store Road, Murray, Kentucky 42071, United States



**Total Area: 3488 sq. ft**

Floor 1: 261 sq. ft, Floor 2: 3185 sq. ft, Floor 3: 42 sq. ft


Excluded: Covered patio 1217 sq. ft, Garage 1737 sq. ft, Patio 2160 sq. ft, Fireplace 11 sq. ft, Attic 431 sq. ft, Walls: 429 sq. ft

## Property summary



Home report

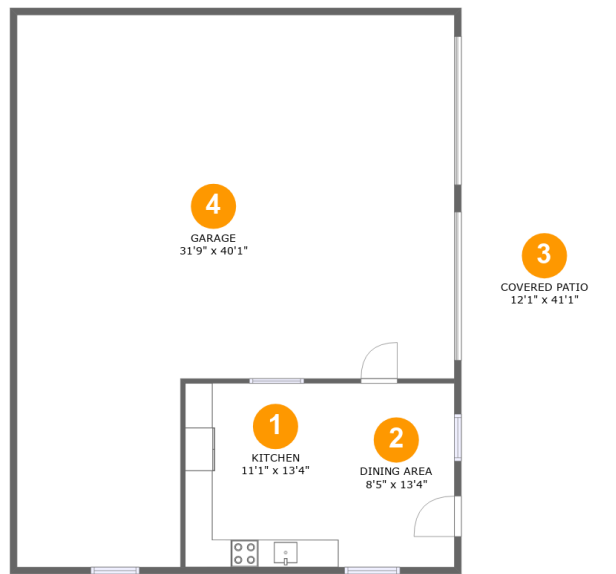
**647 Gibbs Store Road, Murray, Kentucky 42071, United States**

 **1**  
Half baths

 **2**  
Garages

Home report

647 Gibbs Store Road, Murray, Kentucky 42071, United States



## Room dimensions

Floor 1

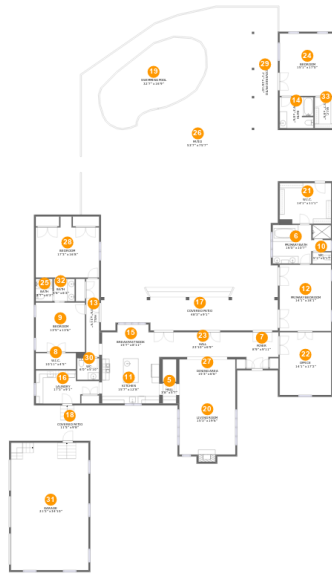
Total:261sqft

Excluded: 1496sqft

#		Max Dimensions	sqft	Included
1	Kitchen	11'1" x 13'4"	148 sq. ft	Yes
2	Dining Area	8'5" x 13'4"	112 sq. ft	Yes
3	Covered Patio	12'1" x 41'1"	496 sq. ft	No
4	Garage	31'9" x 40'1"	1000 sq. ft	No

Home report

647 Gibbs Store Road, Murray, Kentucky 42071, United States



## Room dimensions

Floor 2

Total:3185sqft

Excluded: 3629sqft

#		Max Dimensions	sqft	Included
5	Hall	3'8" x 5'7"	21 sq. ft	Yes
6	Primary Bath	16'0" x 10'7"	148 sq. ft	Yes
7	Foyer	8'9" x 9'11"	78 sq. ft	Yes
8	W.I.C.	10'11" x 4'5"	48 sq. ft	Yes
9	Bedroom	13'5" x 13'6"	181 sq. ft	Yes
10	WC	5'1" x 3'1"	16 sq. ft	Yes
11	Kitchen	15'7" x 12'8"	198 sq. ft	Yes
12	Primary Bedroom	14'1" x 18'1"	255 sq. ft	Yes
13	Hall	3'6" x 21'4"	75 sq. ft	Yes
14	Bath	9'3" x 8'6"	77 sq. ft	Yes
15	Breakfast Nook	15'7" x 8'11"	124 sq. ft	Yes

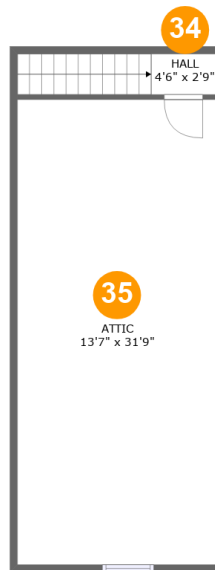
Home report

**647 Gibbs Store Road, Murray, Kentucky 42071, United States**

#		Max Dimensions	sqft	Included
16	Laundry	17'3" x 9'1"	125 sq. ft	Yes
17	Covered Patio	48'3" x 9'1"	420 sq. ft	No
18	Covered Patio	11'5" x 9'8"	110 sq. ft	No
19	Swimming Pool	32'7" x 16'9"	439 sq. ft	No
20	Living Room	15'3" x 19'6"	308 sq. ft	Yes
21	W.I.C.	14'1" x 11'1"	156 sq. ft	Yes
22	Office	14'1" x 17'2"	241 sq. ft	Yes
23	Hall	23'10" x 6'9"	161 sq. ft	Yes
24	Bedroom	15'1" x 17'0"	258 sq. ft	Yes
25	Bath	4'7" x 6'2"	28 sq. ft	Yes
26	Patio	53'7" x 75'7"	2599 sq. ft	No
27	Dining Area	15'3" x 6'6"	99 sq. ft	Yes
28	Bedroom	17'3" x 16'8"	246 sq. ft	Yes
29	Covered Patio	7'1" x 26'10"	191 sq. ft	No
30	WC	6'0" x 5'10"	35 sq. ft	Yes
31	Garage	21'2" x 34'10"	737 sq. ft	No
32	Bath	5'8" x 6'2"	35 sq. ft	Yes
33	W.I.C.	5'7" x 8'6"	47 sq. ft	Yes

Home report

647 Gibbs Store Road, Murray, Kentucky 42071, United States



## Room dimensions

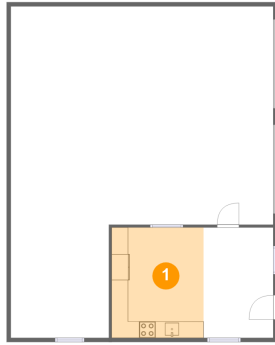
Floor 3

Total:42sqft

Excluded: 431sqft

#		Max Dimensions	sqft	Included
34	Hall	4'6" x 2'9"	38 sq. ft	Yes
35	Attic	13'7" x 31'9"	431 sq. ft	No

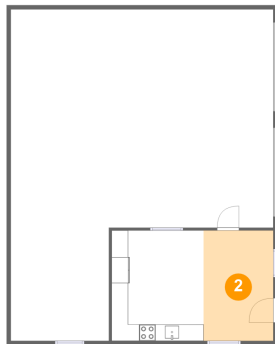
## 1 Floor 1 - Kitchen



Max Dimensions: 11'1" x 13'4"  
Calculated Area: 148 sq. ft  
Included: Yes

Heated: Yes  
Finished: Yes  
Enclosed: Yes  
Contiguous: Yes  
Permitted: Yes  
Wet space: No  
Addition: No  
Conversion: No

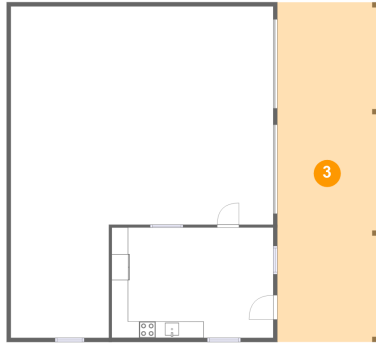
## 2 Floor 1 - Dining Area



Max Dimensions: 8'5" x 13'4"  
Calculated Area: 112 sq. ft  
Included: Yes

Heated: Yes  
Finished: Yes  
Enclosed: Yes  
Contiguous: Yes  
Permitted: Yes  
Wet space: No  
Addition: No  
Conversion: No

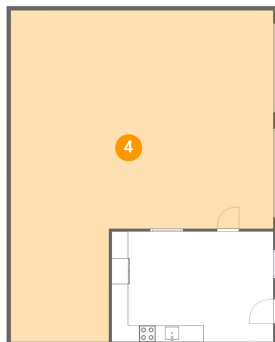
### 3 Floor 1 - Covered Patio



Max Dimensions: 12'1" x 41'1"  
Calculated Area: 496 sq. ft  
Included: No

Heated: No  
Finished: Yes  
Enclosed: No  
Contiguous: Yes  
Permitted: Yes  
Wet space: No  
Addition: No  
Conversion: No

### 4 Floor 1 - Garage



Max Dimensions: 31'9" x 40'1"  
Calculated Area: 1000 sq. ft  
Included: No

Heated: No  
Finished: No  
Enclosed: Yes  
Contiguous: Yes  
Permitted: Yes  
Wet space: No  
Addition: No  
Conversion: No

### 5 Floor 2 - Hall



Max Dimensions: 3'8" x 5'7"  
Calculated Area: 21 sq. ft  
Included: Yes

Heated: Yes  
Finished: Yes  
Enclosed: Yes  
Contiguous: Yes  
Permitted: Yes  
Wet space: No  
Addition: No  
Conversion: No

**6** Floor 2 - Primary Bath

---



Max Dimensions: 16'0" x 10'7"  
Calculated Area: 148 sq. ft  
Included: Yes

Heated: Yes  
Finished: Yes  
Enclosed: Yes  
Contiguous: Yes  
Permitted: Yes  
Wet space: Yes  
Addition: No  
Conversion: No

**7** Floor 2 - Foyer

---



Max Dimensions: 8'9" x 9'11"  
Calculated Area: 78 sq. ft  
Included: Yes

Heated: Yes  
Finished: Yes  
Enclosed: Yes  
Contiguous: Yes  
Permitted: Yes  
Wet space: No  
Addition: No  
Conversion: No

**8** Floor 2 - W.I.C.

---



Max Dimensions: 10'11" x 4'5"  
Calculated Area: 48 sq. ft  
Included: Yes

Heated: Yes  
Finished: Yes  
Enclosed: Yes  
Contiguous: Yes  
Permitted: Yes  
Wet space: No  
Addition: No  
Conversion: No

**9** Floor 2 - Bedroom



Max Dimensions: 13'5" x 13'6"  
Calculated Area: 181 sq. ft  
Included: Yes

Heated: Yes  
Finished: Yes  
Enclosed: Yes  
Contiguous: Yes  
Permitted: Yes  
Wet space: No  
Addition: No  
Conversion: No

**10** Floor 2 - WC



Max Dimensions: 5'1" x 3'1"  
Calculated Area: 16 sq. ft  
Included: Yes

Heated: Yes  
Finished: Yes  
Enclosed: Yes  
Contiguous: Yes  
Permitted: Yes  
Wet space: No  
Addition: No  
Conversion: No

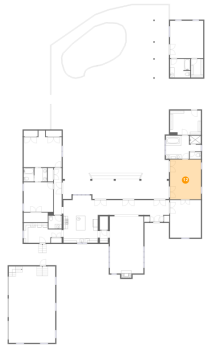
**11** Floor 2 - Kitchen



Max Dimensions: 15'7" x 12'8"  
Calculated Area: 198 sq. ft  
Included: Yes

Heated: Yes  
Finished: Yes  
Enclosed: Yes  
Contiguous: Yes  
Permitted: Yes  
Wet space: No  
Addition: No  
Conversion: No

## 12 Floor 2 - Primary Bedroom



Max Dimensions: 14'1" x 18'1"  
Calculated Area: 255 sq. ft  
Included: Yes

Heated: Yes  
Finished: Yes  
Enclosed: Yes  
Contiguous: Yes  
Permitted: Yes  
Wet space: No  
Addition: No  
Conversion: No

## 13 Floor 2 - Hall



Max Dimensions: 3'6" x 21'4"  
Calculated Area: 75 sq. ft  
Included: Yes

Heated: Yes  
Finished: Yes  
Enclosed: Yes  
Contiguous: Yes  
Permitted: Yes  
Wet space: No  
Addition: No  
Conversion: No

## 14 Floor 2 - Bath



Max Dimensions: 9'3" x 8'6"  
Calculated Area: 77 sq. ft  
Included: Yes

Heated: Yes  
Finished: Yes  
Enclosed: Yes  
Contiguous: Yes  
Permitted: Yes  
Wet space: Yes  
Addition: No  
Conversion: No

### 15 Floor 2 - Breakfast Nook



Max Dimensions: 15'7" x 8'11"  
Calculated Area: 124 sq. ft  
Included: Yes

Heated: Yes  
Finished: Yes  
Enclosed: Yes  
Contiguous: Yes  
Permitted: Yes  
Wet space: No  
Addition: No  
Conversion: No

### 16 Floor 2 - Laundry



Max Dimensions: 17'3" x 9'1"  
Calculated Area: 125 sq. ft  
Included: Yes

Heated: Yes  
Finished: Yes  
Enclosed: Yes  
Contiguous: Yes  
Permitted: Yes  
Wet space: No  
Addition: No  
Conversion: No

### 17 Floor 2 - Covered Patio



Max Dimensions: 48'3" x 9'1"  
Calculated Area: 420 sq. ft  
Included: No

Heated: No  
Finished: Yes  
Enclosed: No  
Contiguous: Yes  
Permitted: Yes  
Wet space: No  
Addition: No  
Conversion: No

### 18 Floor 2 - Covered Patio



Max Dimensions: 11'5" x 9'8"  
Calculated Area: 110 sq. ft  
Included: No

Heated: No  
Finished: Yes  
Enclosed: No  
Contiguous: Yes  
Permitted: Yes  
Wet space: No  
Addition: No  
Conversion: No

### 19 Floor 2 - Swimming Pool



Max Dimensions: 32'7" x 16'9"  
Calculated Area: 439 sq. ft  
Included: No

Heated: No  
Finished: No  
Enclosed: No  
Contiguous: Yes  
Permitted: No  
Wet space: No  
Addition: No  
Conversion: No

### 20 Floor 2 - Living Room



Max Dimensions: 15'3" x 19'6"  
Calculated Area: 308 sq. ft  
Included: Yes

Heated: Yes  
Finished: Yes  
Enclosed: Yes  
Contiguous: Yes  
Permitted: Yes  
Wet space: No  
Addition: No  
Conversion: No

**21** Floor 2 - W.I.C.

---



Max Dimensions: 14'1" x 11'1"  
Calculated Area: 156 sq. ft  
Included: Yes

Heated: Yes  
Finished: Yes  
Enclosed: Yes  
Contiguous: Yes  
Permitted: Yes  
Wet space: No  
Addition: No  
Conversion: No

**22** Floor 2 - Office

---



Max Dimensions: 14'1" x 17'2"  
Calculated Area: 241 sq. ft  
Included: Yes

Heated: Yes  
Finished: Yes  
Enclosed: Yes  
Contiguous: Yes  
Permitted: Yes  
Wet space: No  
Addition: No  
Conversion: No

**23** Floor 2 - Hall

---



Max Dimensions: 23'10" x 6'9"  
Calculated Area: 161 sq. ft  
Included: Yes

Heated: Yes  
Finished: Yes  
Enclosed: Yes  
Contiguous: Yes  
Permitted: Yes  
Wet space: No  
Addition: No  
Conversion: No

**24** Floor 2 - Bedroom



Max Dimensions: 15'1" x 17'0"  
Calculated Area: 258 sq. ft  
Included: Yes

Heated: Yes  
Finished: Yes  
Enclosed: Yes  
Contiguous: Yes  
Permitted: Yes  
Wet space: No  
Addition: No  
Conversion: No

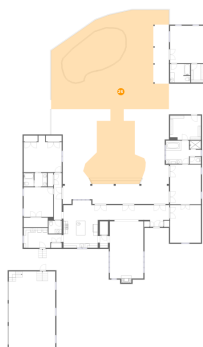
**25** Floor 2 - Bath



Max Dimensions: 4'7" x 6'2"  
Calculated Area: 28 sq. ft  
Included: Yes

Heated: Yes  
Finished: Yes  
Enclosed: Yes  
Contiguous: Yes  
Permitted: Yes  
Wet space: Yes  
Addition: No  
Conversion: No

**26** Floor 2 - Patio



Max Dimensions: 53'7" x 75'7"  
Calculated Area: 2599 sq. ft  
Included: No

Heated: No  
Finished: Yes  
Enclosed: No  
Contiguous: Yes  
Permitted: Yes  
Wet space: No  
Addition: No  
Conversion: No

**27** Floor 2 - Dining Area



Max Dimensions: 15'3" x 6'6"  
Calculated Area: 99 sq. ft  
Included: Yes

Heated: Yes  
Finished: Yes  
Enclosed: Yes  
Contiguous: Yes  
Permitted: Yes  
Wet space: No  
Addition: No  
Conversion: No

**28** Floor 2 - Bedroom



Max Dimensions: 17'3" x 16'8"  
Calculated Area: 246 sq. ft  
Included: Yes

Heated: Yes  
Finished: Yes  
Enclosed: Yes  
Contiguous: Yes  
Permitted: Yes  
Wet space: No  
Addition: No  
Conversion: No

**29** Floor 2 - Covered Patio



Max Dimensions: 7'1" x 26'10"  
Calculated Area: 191 sq. ft  
Included: No

Heated: No  
Finished: Yes  
Enclosed: No  
Contiguous: Yes  
Permitted: Yes  
Wet space: No  
Addition: No  
Conversion: No

**30** Floor 2 - WC



Max Dimensions: 6'0" x 5'10"  
Calculated Area: 35 sq. ft  
Included: Yes

Heated: Yes  
Finished: Yes  
Enclosed: Yes  
Contiguous: Yes  
Permitted: Yes  
Wet space: Yes  
Addition: No  
Conversion: No

**31** Floor 2 - Garage



Max Dimensions: 21'2" x 34'10"  
Calculated Area: 737 sq. ft  
Included: No

Heated: No  
Finished: No  
Enclosed: Yes  
Contiguous: Yes  
Permitted: Yes  
Wet space: No  
Addition: No  
Conversion: No

**32** Floor 2 - Bath



Max Dimensions: 5'8" x 6'2"  
Calculated Area: 35 sq. ft  
Included: Yes

Heated: Yes  
Finished: Yes  
Enclosed: Yes  
Contiguous: Yes  
Permitted: Yes  
Wet space: Yes  
Addition: No  
Conversion: No

**33** Floor 2 - W.I.C.



Max Dimensions: 5'7" x 8'6"  
Calculated Area: 47 sq. ft  
Included: Yes

Heated: Yes  
Finished: Yes  
Enclosed: Yes  
Contiguous: Yes  
Permitted: Yes  
Wet space: No  
Addition: No  
Conversion: No

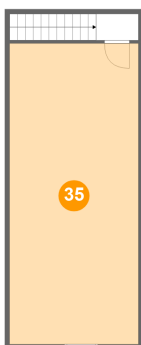
**34** Floor 3 - Hall



Max Dimensions: 4'6" x 2'9"  
Calculated Area: 38 sq. ft  
Included: No

Heated: Yes  
Finished: Yes  
Enclosed: Yes  
Contiguous: No  
Permitted: Yes  
Wet space: No  
Addition: No  
Conversion: No

**35** Floor 3 - Attic



Max Dimensions: 13'7" x 31'9"  
Calculated Area: 431 sq. ft  
Included: No

Heated: No  
Finished: No  
Enclosed: Yes  
Contiguous: Yes  
Permitted: Yes  
Wet space: No  
Addition: No  
Conversion: No