

Home report

9 Overlook Drive, Lakeville, Wayne County, Pennsylvania, United States, 18438



Total Area: 4277 sq. ft

Floor 1: 1615 sq. ft, Floor 2: 1936 sq. ft, Floor 3: 726 sq. ft

Excluded: Room 170 sq. ft, Garage 664 sq. ft, Balcony 364 sq. ft, Porch 127 sq. ft, Walls: 339 sq. ft

Property summary

 **3** Floors

 **5** Bedrooms

 **5** Bathrooms

Home report

9 Overlook Drive, Lakeville, Wayne County, Pennsylvania, United States, 18438



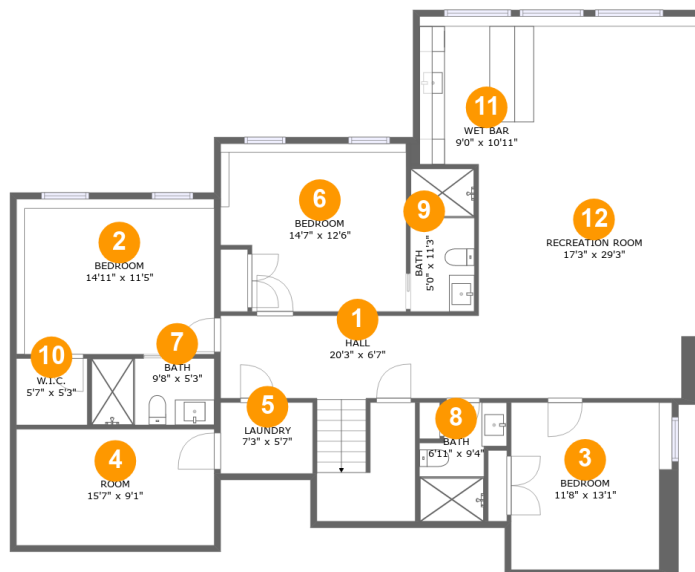
1
Half baths



1
Garages

Home report

9 Overlook Drive, Lakeville, Wayne County, Pennsylvania, United States, 18438



Room dimensions

Floor 1

Total:1615sqft

Excluded: 142sqft

#		Max Dimensions	sqft	Included
1	Hall	20'3" x 6'7"	203 sq. ft	Yes
2	Bedroom	14'11" x 11'5"	190 sq. ft	Yes
3	Bedroom	11'8" x 13'1"	159 sq. ft	Yes
4	Room	15'7" x 9'1"	142 sq. ft	No
5	Laundry	7'3" x 5'7"	40 sq. ft	Yes
6	Bedroom	14'7" x 12'6"	180 sq. ft	Yes
7	Bath	9'8" x 5'3"	51 sq. ft	Yes
8	Bath	6'11" x 9'4"	48 sq. ft	Yes
9	Bath	5'0" x 11'3"	57 sq. ft	Yes
10	W.I.C.	5'7" x 5'3"	29 sq. ft	Yes
11	Wet Bar	9'0" x 10'11"	106 sq. ft	Yes

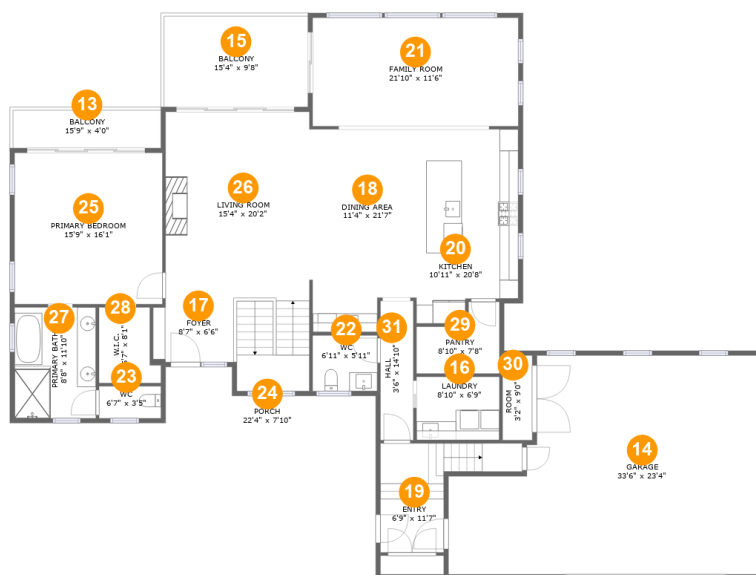
Home report

9 Overlook Drive, Lakeville, Wayne County, Pennsylvania, United States, 18438

#		Max Dimensions	sqft	Included
12	Recreation Room	17'3" x 29'3"	461 sq. ft	Yes

Home report

9 Overlook Drive, Lakeville, Wayne County, Pennsylvania, United States, 18438



Room dimensions

Floor 2

Total:1936sqft

Excluded: 1030sqft

#		Max Dimensions	sqft	Included
13	Balcony	15'9" x 4'0"	63 sq. ft	No
14	Garage	33'6" x 23'4"	663 sq. ft	No
15	Balcony	15'4" x 9'8"	148 sq. ft	No
16	Laundry	8'10" x 6'9"	60 sq. ft	Yes
17	Foyer	8'7" x 6'6"	131 sq. ft	Yes
18	Dining Area	11'4" x 21'7"	228 sq. ft	Yes
19	Entry	6'9" x 11'7"	103 sq. ft	Yes
20	Kitchen	10'11" x 20'8"	210 sq. ft	Yes
21	Family Room	21'10" x 11'6"	253 sq. ft	Yes
22	WC	6'11" x 5'11"	41 sq. ft	Yes
23	WC	6'7" x 3'5"	22 sq. ft	Yes

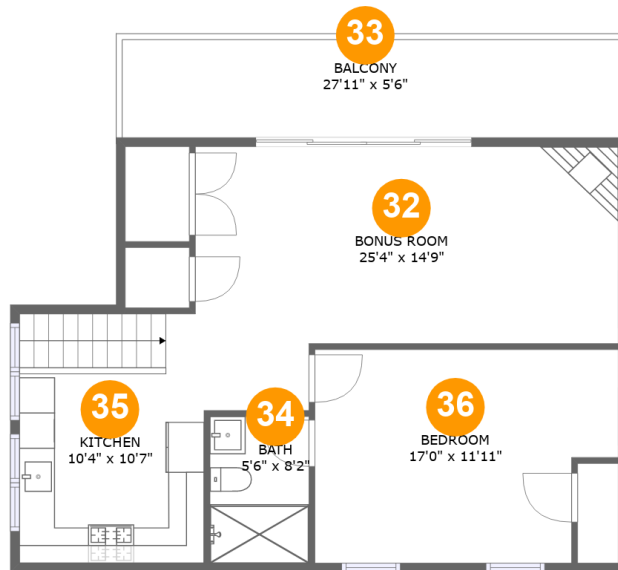
Home report

9 Overlook Drive, Lakeville, Wayne County, Pennsylvania, United States, 18438

#		Max Dimensions	sqft	Included
24	Porch	22'4" x 7'10"	127 sq. ft	No
25	Primary Bedroom	15'9" x 16'1"	253 sq. ft	Yes
26	Living Room	15'4" x 20'2"	309 sq. ft	Yes
27	Primary Bath	8'8" x 11'10"	102 sq. ft	Yes
28	W.I.C.	6'7" x 8'1"	46 sq. ft	Yes
29	Pantry	8'10" x 7'8"	53 sq. ft	Yes
30	Room	3'2" x 9'0"	28 sq. ft	No
31	Hall	3'6" x 14'10"	52 sq. ft	Yes

Home report

9 Overlook Drive, Lakeville, Wayne County, Pennsylvania, United States, 18438



Room dimensions

Floor 3

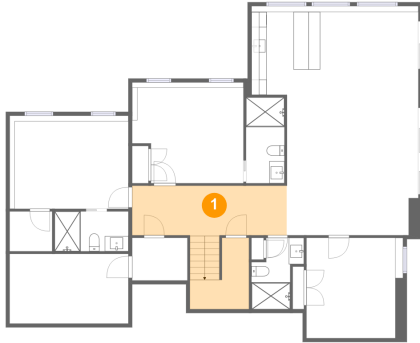
Total:726sqft

Excluded: 153sqft

#		Max Dimensions	sqft	Included
32	Bonus Room	25'4" x 14'9"	319 sq. ft	Yes
33	Balcony	27'11" x 5'6"	153 sq. ft	No
34	Bath	5'6" x 8'2"	45 sq. ft	Yes
35	Kitchen	10'4" x 10'7"	107 sq. ft	Yes
36	Bedroom	17'0" x 11'11"	187 sq. ft	Yes

9 Overlook Drive, Lakeville, Wayne County, Pennsylvania, United States, 18438

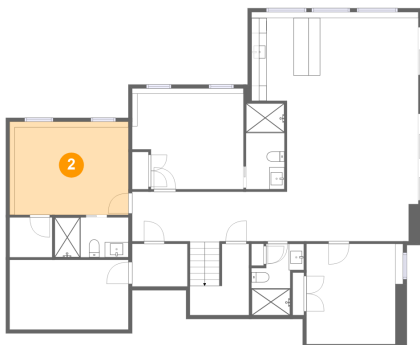
1 Floor 1 - Hall



Max Dimensions: 20'3" x 6'7"
Calculated Area: 203 sq. ft
Included: Yes

Heated: Yes
Finished: Yes
Enclosed: Yes
Contiguous: Yes
Permitted: Yes
Wet space: No
Addition: No
Conversion: No

2 Floor 1 - Bedroom



Max Dimensions: 14'11" x 11'5"
Calculated Area: 190 sq. ft
Included: Yes

Heated: Yes
Finished: Yes
Enclosed: Yes
Contiguous: Yes
Permitted: Yes
Wet space: No
Addition: No
Conversion: No

9 Overlook Drive, Lakeville, Wayne County, Pennsylvania, United States, 18438

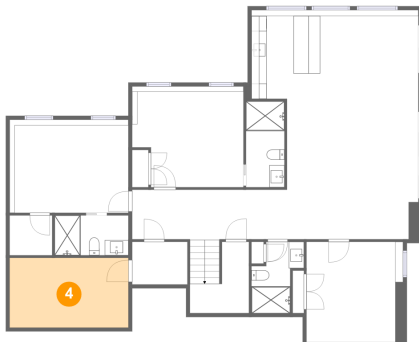
3 Floor 1 - Bedroom



Max Dimensions: 11'8" x 13'1"
Calculated Area: 159 sq. ft
Included: Yes

Heated: Yes
Finished: Yes
Enclosed: Yes
Contiguous: Yes
Permitted: Yes
Wet space: No
Addition: No
Conversion: No

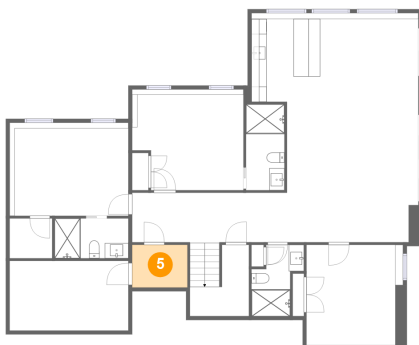
4 Floor 1 - Room



Max Dimensions: 15'7" x 9'1"
Calculated Area: 142 sq. ft
Included: No

Heated: Yes
Finished: No
Enclosed: Yes
Contiguous: Yes
Permitted: Yes
Wet space: No
Addition: No
Conversion: No

5 Floor 1 - Laundry

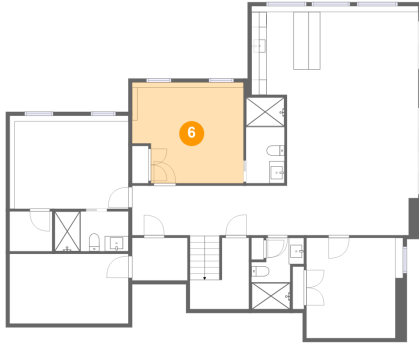


Max Dimensions: 7'3" x 5'7"
Calculated Area: 40 sq. ft
Included: Yes

Heated: Yes
Finished: Yes
Enclosed: Yes
Contiguous: Yes
Permitted: Yes
Wet space: No
Addition: No
Conversion: No

9 Overlook Drive, Lakeville, Wayne County, Pennsylvania, United States, 18438

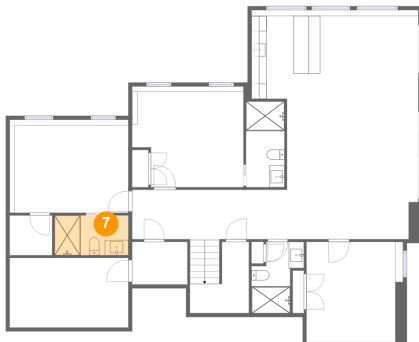
6 Floor 1 - Bedroom



Max Dimensions: 14'7" x 12'6"
Calculated Area: 180 sq. ft
Included: Yes

Heated: Yes
Finished: Yes
Enclosed: Yes
Contiguous: Yes
Permitted: Yes
Wet space: No
Addition: No
Conversion: No

7 Floor 1 - Bath



Max Dimensions: 9'8" x 5'3"
Calculated Area: 51 sq. ft
Included: Yes

Heated: Yes
Finished: Yes
Enclosed: Yes
Contiguous: Yes
Permitted: Yes
Wet space: Yes
Addition: No
Conversion: No

8 Floor 1 - Bath

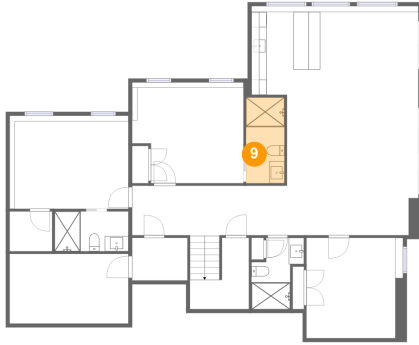


Max Dimensions: 6'11" x 9'4"
Calculated Area: 48 sq. ft
Included: Yes

Heated: Yes
Finished: Yes
Enclosed: Yes
Contiguous: Yes
Permitted: Yes
Wet space: Yes
Addition: No
Conversion: No

9 Overlook Drive, Lakeville, Wayne County, Pennsylvania, United States, 18438

9 Floor 1 - Bath



Max Dimensions: 5'0" x 11'3"
Calculated Area: 57 sq. ft
Included: Yes

Heated: Yes
Finished: Yes
Enclosed: Yes
Contiguous: Yes
Permitted: Yes
Wet space: Yes
Addition: No
Conversion: No

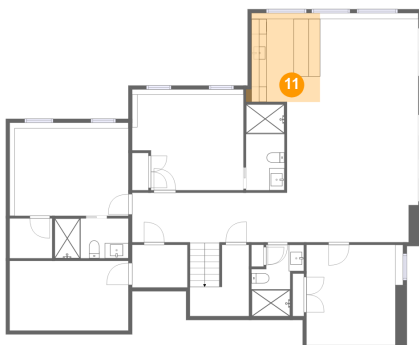
10 Floor 1 - W.I.C.



Max Dimensions: 5'7" x 5'3"
Calculated Area: 29 sq. ft
Included: Yes

Heated: Yes
Finished: Yes
Enclosed: Yes
Contiguous: Yes
Permitted: Yes
Wet space: No
Addition: No
Conversion: No

11 Floor 1 - Wet Bar

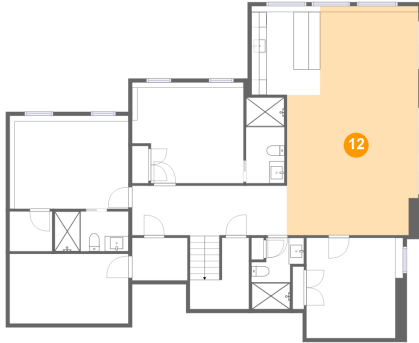


Max Dimensions: 9'0" x 10'11"
Calculated Area: 106 sq. ft
Included: Yes

Heated: Yes
Finished: Yes
Enclosed: Yes
Contiguous: Yes
Permitted: Yes
Wet space: No
Addition: No
Conversion: No

9 Overlook Drive, Lakeville, Wayne County, Pennsylvania, United States, 18438

12 Floor 1 - Recreation Room



Max Dimensions: 17'3" x 29'3"
Calculated Area: 461 sq. ft
Included: Yes

Heated: Yes
Finished: Yes
Enclosed: Yes
Contiguous: Yes
Permitted: Yes
Wet space: No
Addition: No
Conversion: No

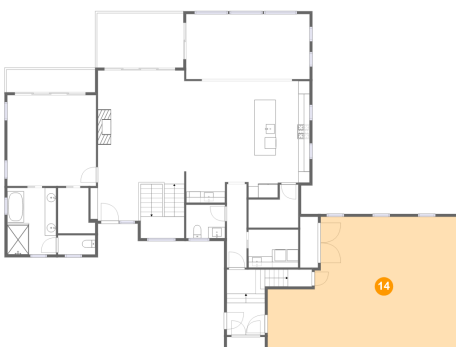
13 Floor 2 - Balcony



Max Dimensions: 15'9" x 4'0"
Calculated Area: 63 sq. ft
Included: No

Heated: No
Finished: Yes
Enclosed: No
Contiguous: Yes
Permitted: Yes
Wet space: No
Addition: No
Conversion: No

14 Floor 2 - Garage



Max Dimensions: 33'6" x 23'4"
Calculated Area: 663 sq. ft
Included: No

Heated: No
Finished: No
Enclosed: Yes
Contiguous: Yes
Permitted: Yes
Wet space: No
Addition: No
Conversion: No

9 Overlook Drive, Lakeville, Wayne County, Pennsylvania, United States, 18438

15 Floor 2 - Balcony



Max Dimensions: 15'4" x 9'8"
Calculated Area: 148 sq. ft
Included: No

Heated: No
Finished: Yes
Enclosed: No
Contiguous: Yes
Permitted: Yes
Wet space: No
Addition: No
Conversion: No

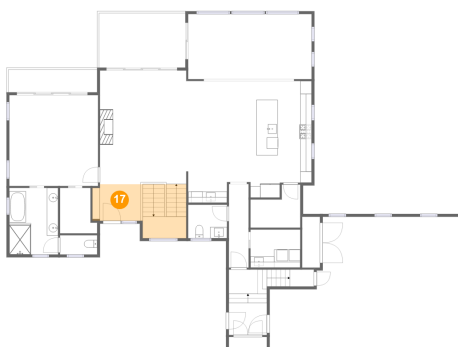
16 Floor 2 - Laundry



Max Dimensions: 8'10" x 6'9"
Calculated Area: 60 sq. ft
Included: Yes

Heated: Yes
Finished: Yes
Enclosed: Yes
Contiguous: Yes
Permitted: Yes
Wet space: No
Addition: No
Conversion: No

17 Floor 2 - Foyer

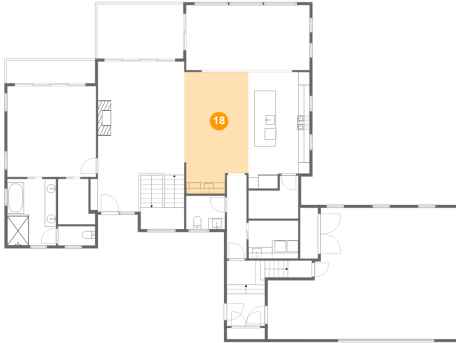


Max Dimensions: 8'7" x 6'6"
Calculated Area: 131 sq. ft
Included: Yes

Heated: Yes
Finished: Yes
Enclosed: Yes
Contiguous: Yes
Permitted: Yes
Wet space: No
Addition: No
Conversion: No

9 Overlook Drive, Lakeville, Wayne County, Pennsylvania, United States, 18438

18 Floor 2 - Dining Area



Max Dimensions: 11'4" x 21'7"
Calculated Area: 228 sq. ft
Included: Yes

Heated: Yes
Finished: Yes
Enclosed: Yes
Contiguous: Yes
Permitted: Yes
Wet space: No
Addition: No
Conversion: No

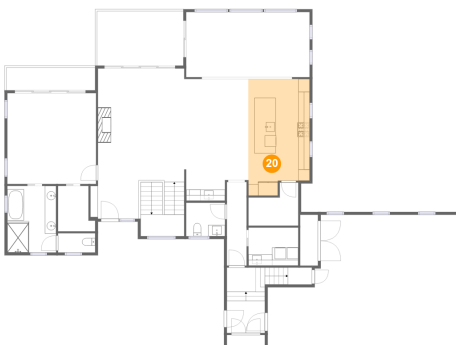
19 Floor 2 - Entry



Max Dimensions: 6'9" x 11'7"
Calculated Area: 103 sq. ft
Included: Yes

Heated: Yes
Finished: Yes
Enclosed: Yes
Contiguous: Yes
Permitted: Yes
Wet space: No
Addition: No
Conversion: No

20 Floor 2 - Kitchen



Max Dimensions: 10'11" x 20'8"
Calculated Area: 210 sq. ft
Included: Yes

Heated: Yes
Finished: Yes
Enclosed: Yes
Contiguous: Yes
Permitted: Yes
Wet space: No
Addition: No
Conversion: No

9 Overlook Drive, Lakeville, Wayne County, Pennsylvania, United States, 18438

21 Floor 2 - Family Room



Max Dimensions: 21'10" x 11'6"
Calculated Area: 253 sq. ft
Included: Yes

Heated: Yes
Finished: Yes
Enclosed: Yes
Contiguous: Yes
Permitted: Yes
Wet space: No
Addition: No
Conversion: No

22 Floor 2 - WC



Max Dimensions: 6'11" x 5'11"
Calculated Area: 41 sq. ft
Included: Yes

Heated: Yes
Finished: Yes
Enclosed: Yes
Contiguous: Yes
Permitted: Yes
Wet space: Yes
Addition: No
Conversion: No

23 Floor 2 - WC



Max Dimensions: 6'7" x 3'5"
Calculated Area: 22 sq. ft
Included: Yes

Heated: Yes
Finished: Yes
Enclosed: Yes
Contiguous: Yes
Permitted: Yes
Wet space: Yes
Addition: No
Conversion: No

9 Overlook Drive, Lakeville, Wayne County, Pennsylvania, United States, 18438

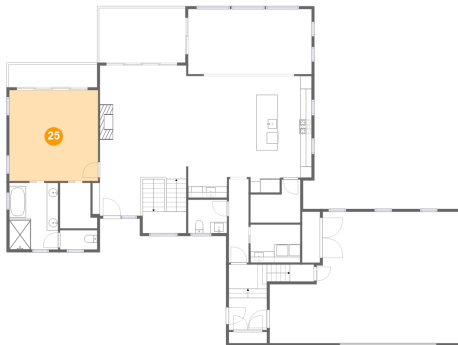
24 Floor 2 - Porch



Max Dimensions: 22'4" x 7'10"
Calculated Area: 127 sq. ft
Included: No

Heated: No
Finished: Yes
Enclosed: No
Contiguous: Yes
Permitted: Yes
Wet space: No
Addition: No
Conversion: No

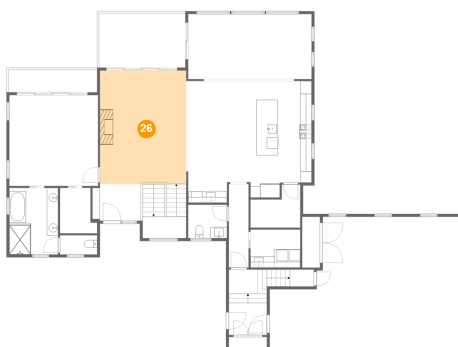
25 Floor 2 - Primary Bedroom



Max Dimensions: 15'9" x 16'1"
Calculated Area: 253 sq. ft
Included: Yes

Heated: Yes
Finished: Yes
Enclosed: Yes
Contiguous: Yes
Permitted: Yes
Wet space: No
Addition: No
Conversion: No

26 Floor 2 - Living Room



Max Dimensions: 15'4" x 20'2"
Calculated Area: 309 sq. ft
Included: Yes

Heated: Yes
Finished: Yes
Enclosed: Yes
Contiguous: Yes
Permitted: Yes
Wet space: No
Addition: No
Conversion: No

9 Overlook Drive, Lakeville, Wayne County, Pennsylvania, United States, 18438

27 Floor 2 - Primary Bath



Max Dimensions: 8'8" x 11'10"
Calculated Area: 102 sq. ft
Included: Yes

Heated: Yes
Finished: Yes
Enclosed: Yes
Contiguous: Yes
Permitted: Yes
Wet space: Yes
Addition: No
Conversion: No

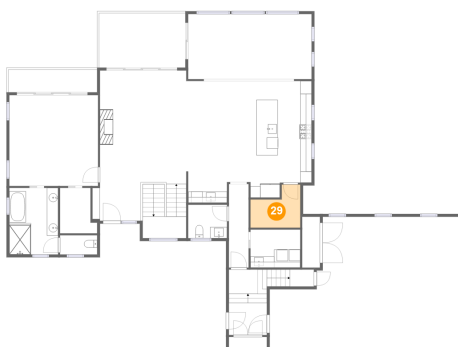
28 Floor 2 - W.I.C.



Max Dimensions: 6'7" x 8'1"
Calculated Area: 46 sq. ft
Included: Yes

Heated: Yes
Finished: Yes
Enclosed: Yes
Contiguous: Yes
Permitted: Yes
Wet space: No
Addition: No
Conversion: No

29 Floor 2 - Pantry



Max Dimensions: 8'10" x 7'8"
Calculated Area: 53 sq. ft
Included: Yes

Heated: Yes
Finished: Yes
Enclosed: Yes
Contiguous: Yes
Permitted: Yes
Wet space: No
Addition: No
Conversion: No

9 Overlook Drive, Lakeville, Wayne County, Pennsylvania, United States, 18438

30 Floor 2 - Room



Max Dimensions: 3'2" x 9'0"
Calculated Area: 28 sq. ft
Included: No

Heated: Yes
Finished: No
Enclosed: Yes
Contiguous: Yes
Permitted: Yes
Wet space: No
Addition: No
Conversion: No

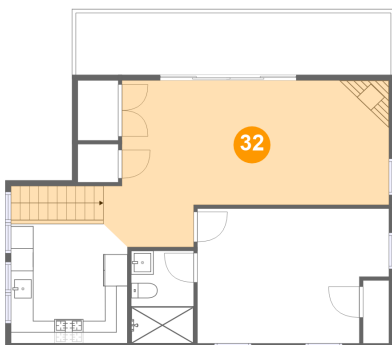
31 Floor 2 - Hall



Max Dimensions: 3'6" x 14'10"
Calculated Area: 52 sq. ft
Included: Yes

Heated: Yes
Finished: Yes
Enclosed: Yes
Contiguous: Yes
Permitted: Yes
Wet space: No
Addition: No
Conversion: No

32 Floor 3 - Bonus Room

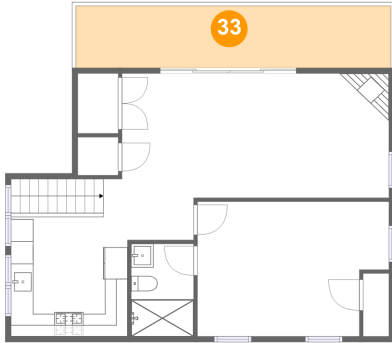


Max Dimensions: 25'4" x 14'9"
Calculated Area: 319 sq. ft
Included: Yes

Heated: Yes
Finished: Yes
Enclosed: Yes
Contiguous: Yes
Permitted: Yes
Wet space: No
Addition: No
Conversion: No

9 Overlook Drive, Lakeville, Wayne County, Pennsylvania, United States, 18438

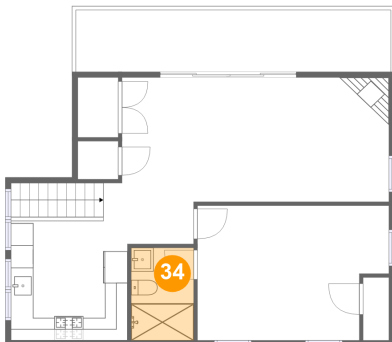
33 Floor 3 - Balcony



Max Dimensions: 27'11" x 5'6"
Calculated Area: 153 sq. ft
Included: No

Heated: No
Finished: Yes
Enclosed: No
Contiguous: Yes
Permitted: Yes
Wet space: No
Addition: No
Conversion: No

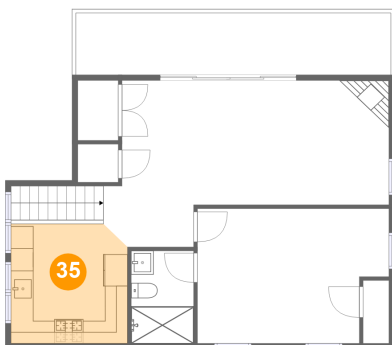
34 Floor 3 - Bath



Max Dimensions: 5'6" x 8'2"
Calculated Area: 45 sq. ft
Included: Yes

Heated: Yes
Finished: Yes
Enclosed: Yes
Contiguous: Yes
Permitted: Yes
Wet space: Yes
Addition: No
Conversion: No

35 Floor 3 - Kitchen



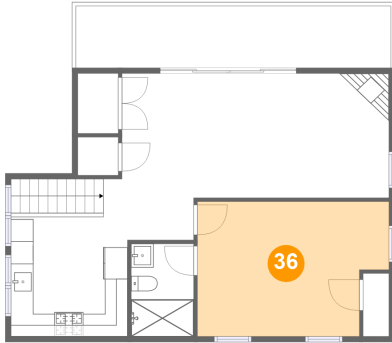
Max Dimensions: 10'4" x 10'7"
Calculated Area: 107 sq. ft
Included: Yes

Heated: Yes
Finished: Yes
Enclosed: Yes
Contiguous: Yes
Permitted: Yes
Wet space: No
Addition: No
Conversion: No

Home report

9 Overlook Drive, Lakeville, Wayne County, Pennsylvania, United States, 18438

36 Floor 3 - Bedroom



Max Dimensions: 17'0" x 11'11"
Calculated Area: 187 sq. ft
Included: Yes

Heated: Yes
Finished: Yes
Enclosed: Yes
Contiguous: Yes
Permitted: Yes
Wet space: No
Addition: No
Conversion: No